

M101008

HYDRAULIC PUSHER FOR CO2

Description:

The CO2 push system is an innovative and effective solution for the relaxed and efficient transport of animals from the pens to the stunning machine.

This system is ideal for slaughterhouses that want to improve the conduction of animals to CO2.

The equipment has a sectional door that allows a group of animals to be collected and transported by push and in groups until they are introduced into the CO2.



Technical Data:

- Hydraulic/electric thrust system
- Pneumatic guillotine door.
- Frame and structure in hot galvanized
- Measures adaptable to any installation.

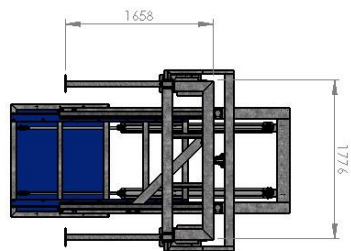
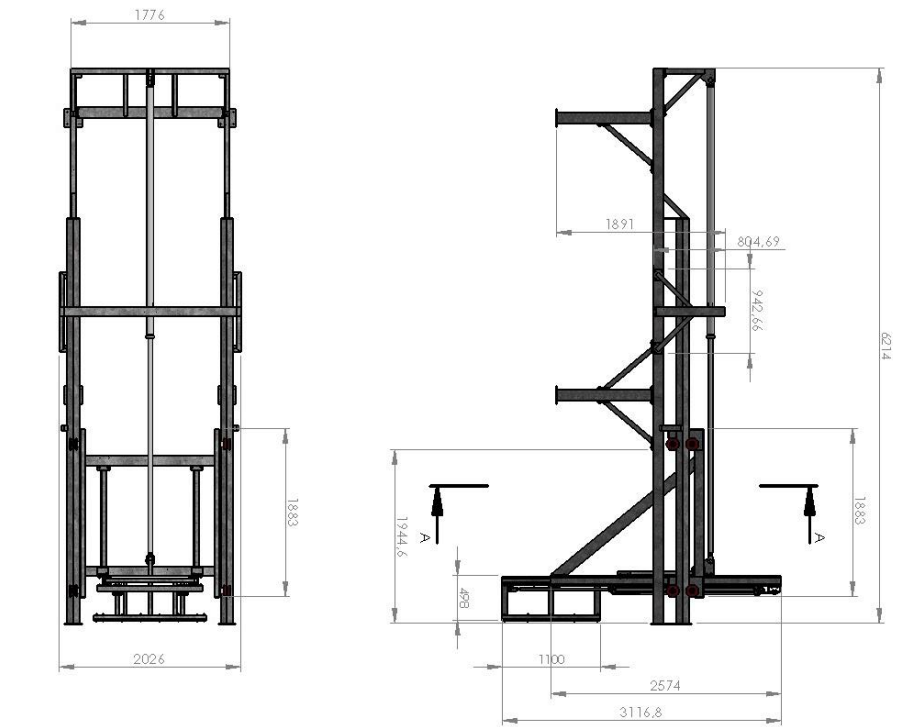
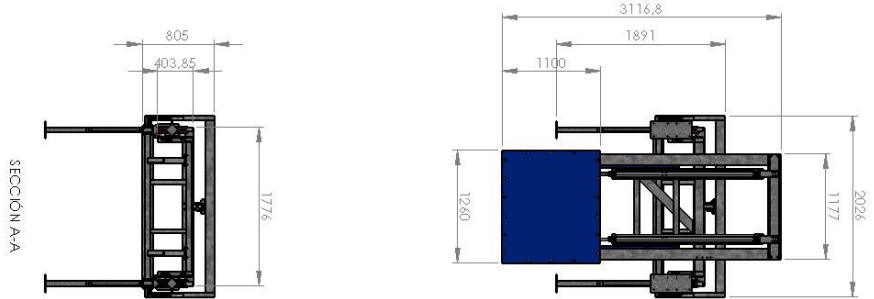
DEMONSTRATIVE VIDEO

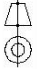
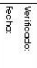
Documentation:

The following documentation will be delivered with the machine:

- CE guarantee certificate
- Manual of use and maintenance
- List of recommended spare parts
- Drawings of machine parts referenced for the maintenance department
- Electrical and/or pneumatic diagrams





MODIFICACIÓN		REVISIÓN		DESIGNACIÓN		OBSERVACIONES		FECHA	
	Verificado		Revisado	MECANOVA INDUSTRIA Y ELECTRICIDAD	A0_M101008A Empujador hidráulico CO2 - Jesus	Material: S-275 JR			
Bedaes, I.S.B		Dobias, R.G.C.		PROYECTO: M101008A EMPUJADOR HIDRAULICO CO2	cliente: _____	Acabado Superf: GALVANIZADO			
		Revis: 04/07/22		INDICACIÓN: _____		Nº DE BANDO: M101008A.000.00.00			Rev:0.0
				REF. PROYECTO: _____					



